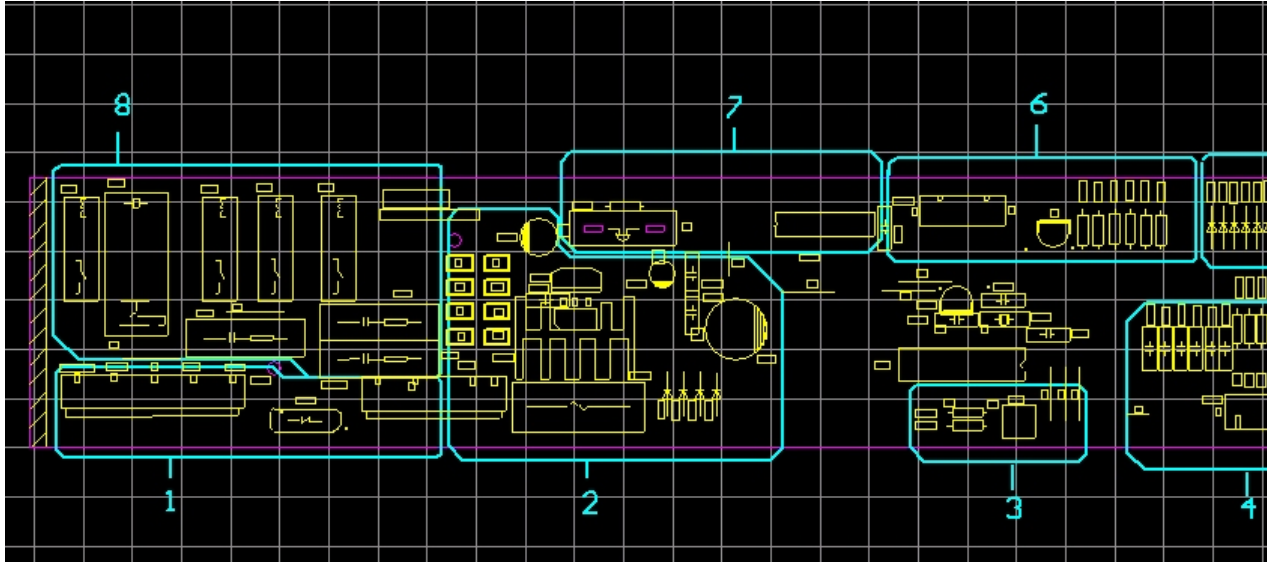


9.PCB diagram

9-1 Part arrangement (main board)



1. CONNECTOR PART FOR CONNECTING AC LOAD.
2. Available FOR NORMAL COMPRESSOR DC12V , 5V , GND SUPPLY .
3. RESET CIRCUIT AND OSCILLATION CIRCUIT
4. Transfer THE ALL SENSOR SIGNAL TO MICOM AFTER REMOVE THE NOISE
5. OPTION SETTING PART FOR MODEL Classification
6. DISPLAY DRIVING PART-LEDDISPLAY, PROCESS THE KEY SIGNAL
7. BUZZER AND DRIVER PART FOR RELAY
8. RELAY FOR CONTROL

9.PCB diagram

9-2 Connector arrangement (main board)

